



SWARCO MIZAR S.R.L.

C-ITS deployment: current and future.

SWARCO | First in Traffic Solutions.

Traffic Light Assistant (AUDI)

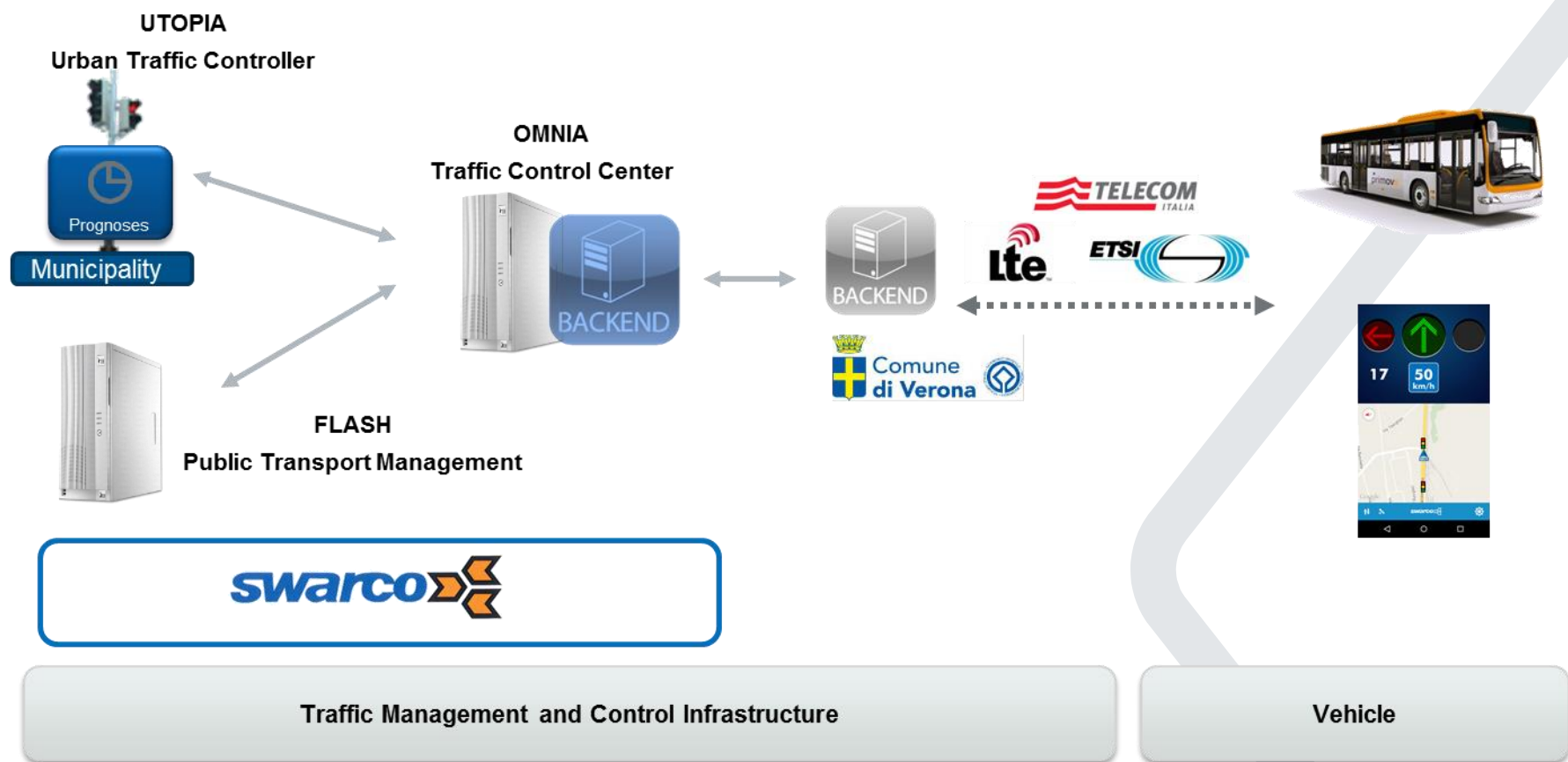


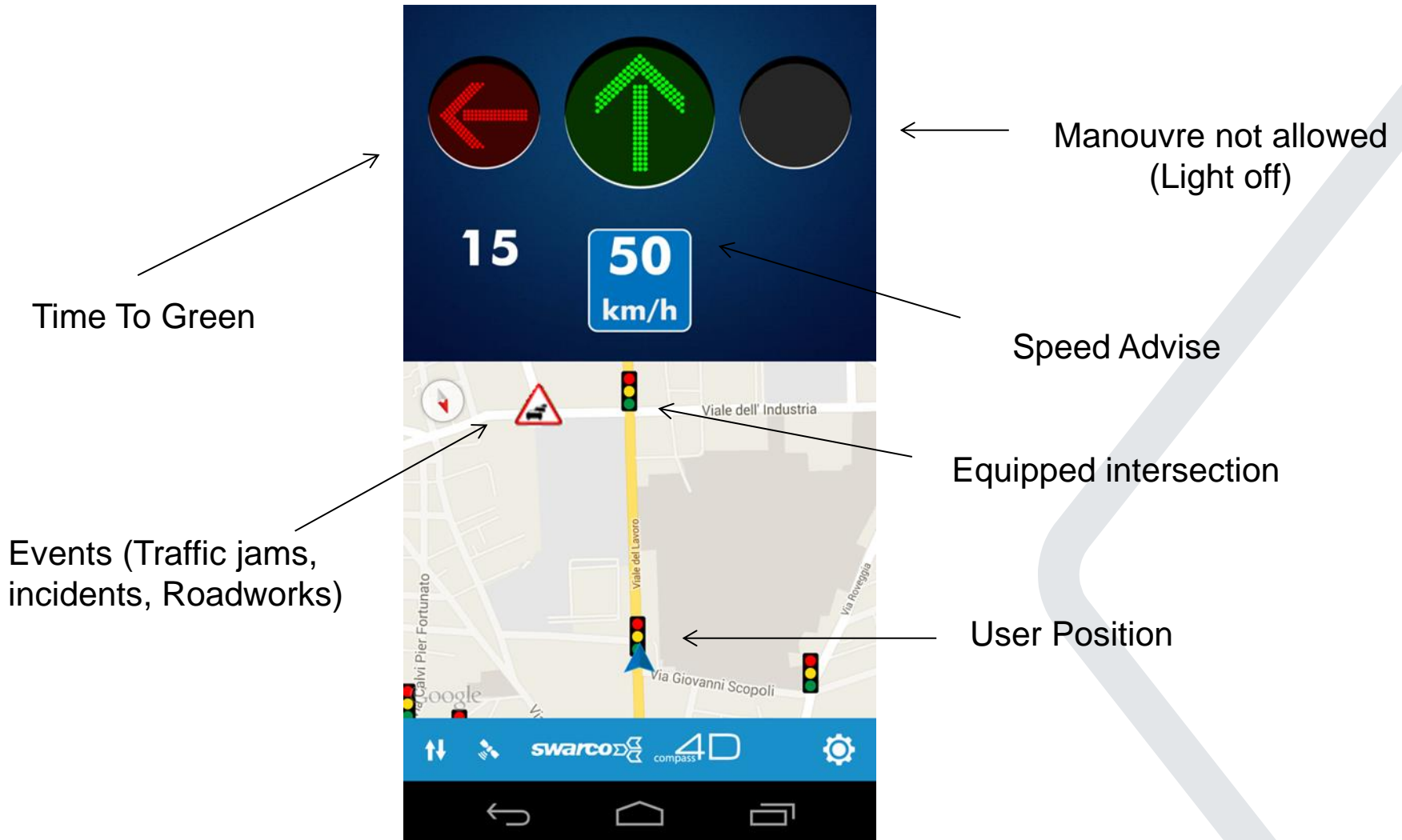
- When approaching a traffic light:
 - Speed advice to driver
 - Smoother journey
 - Saves fuel



- When waiting for green:
 - Time to green...
 - Countdown...
 - Activates "Start and stop"
 - Reduces stress

Compass4D Pilot Site architecture





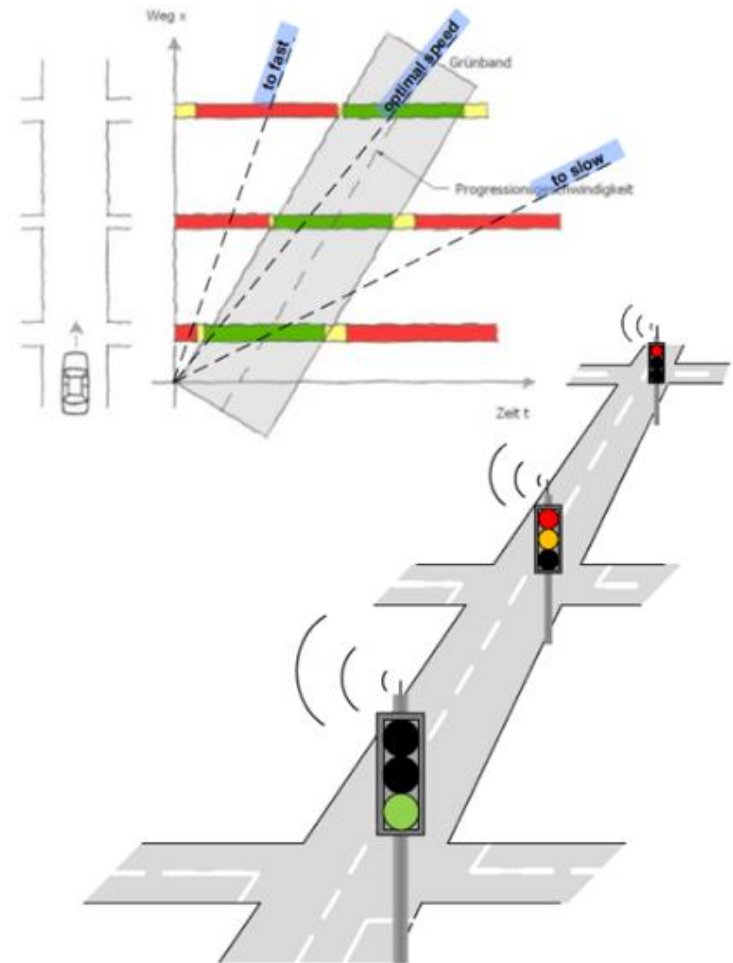
A new city. A similar reality.



Trondheim is a growing Norwegian city with 185.000 inhabitants plus 18.000 students.

Local transport and policy issues:

- CO2 emissions from urban transport reduced by 20% by 2019
 - All traffic growth in Trondheim shall be *with* environmental friendly modes
 - Improve capacity of public transport
-
- To pursue such objectives, the Norwegian Public Road Authority has implemented a full-scale pilot of traffic light assistant (TLA) to obtain both more knowledge as well as evaluate how C-ITS facilities may assist drivers.



Deployment roadmap



Architecture, Interoperability,
Core Technologies



Real-life Application, Validation,
Assessment, Refinement



Implementation, Data Sharing
Procurement, User benefits,
Legal Framework



Real deployment

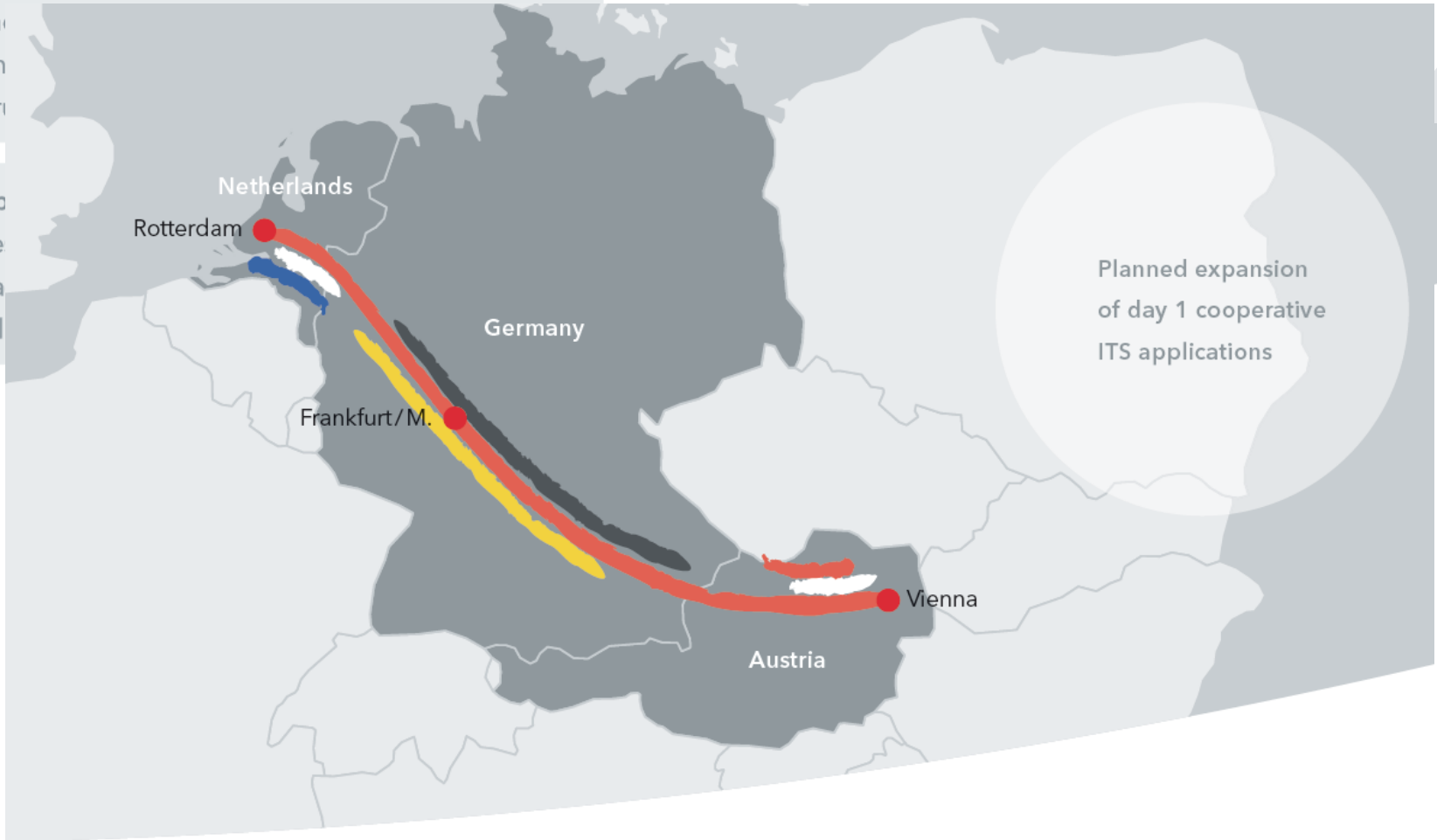


Cooperative ITS Corridor



1 Road
from the
infrastr

2 Prob
vehicle
the roa
control



Hessen Mobil



bast
Bundesanstalt für Straßenwesen

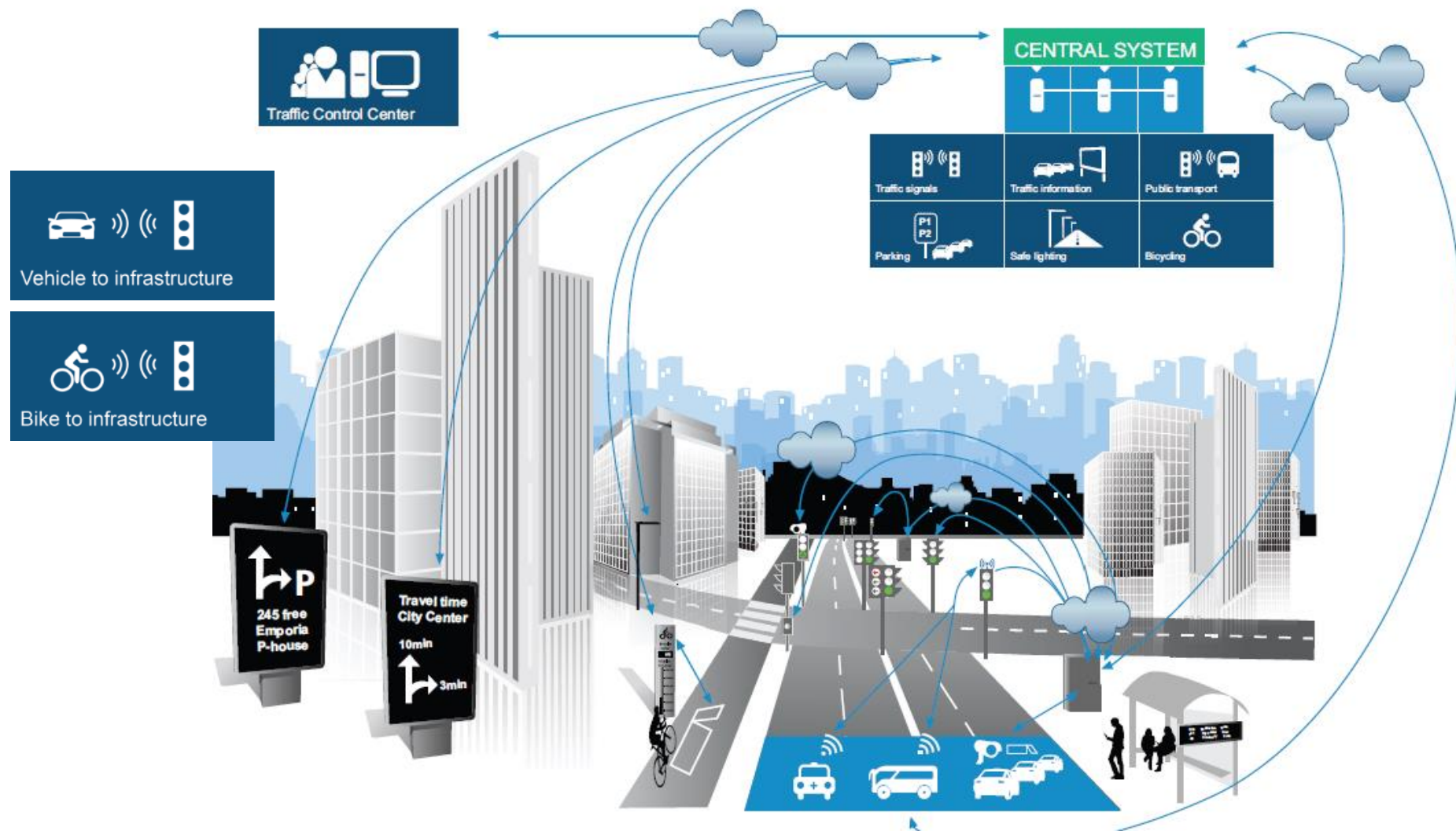


ASFiNAG

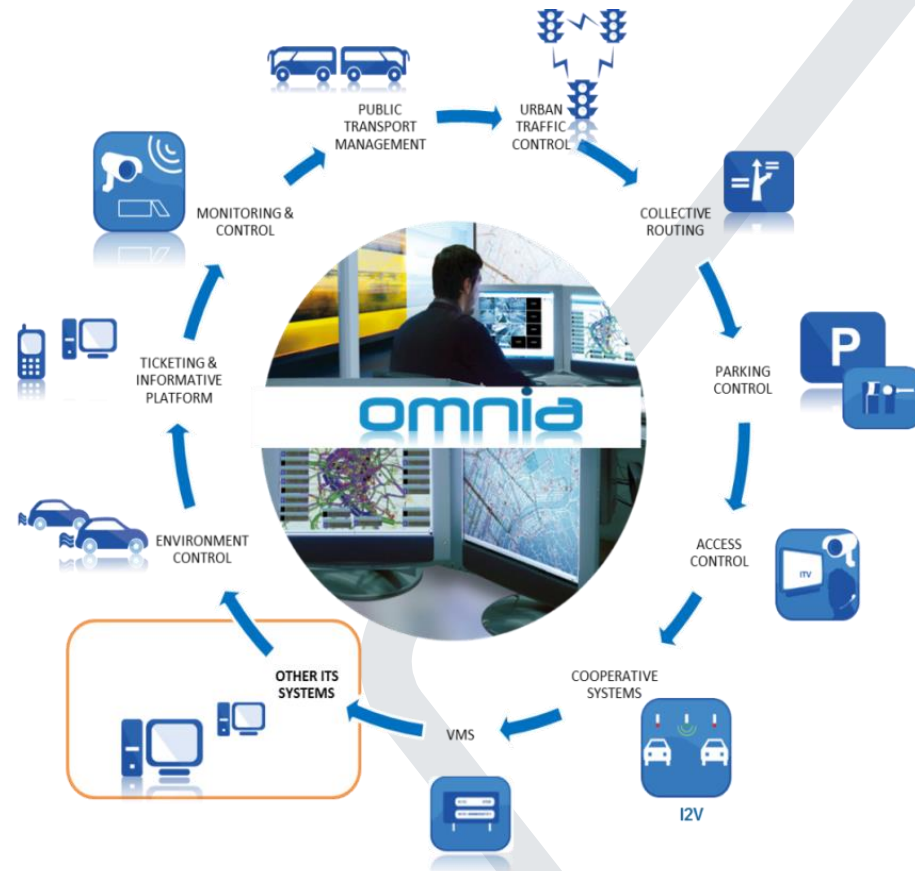


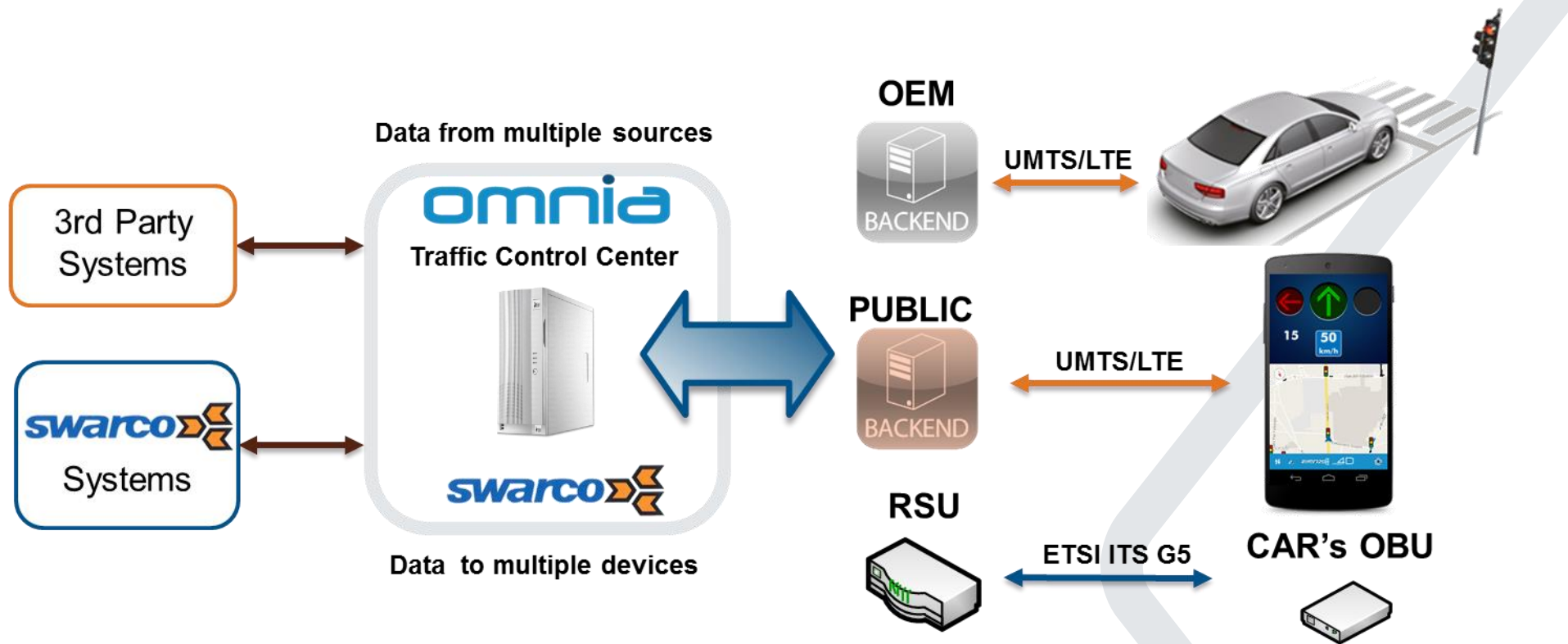
Rijkswaterstaat
Ministry of Infrastructure and the
Environment

The connected city...!!



- Advanced Integrated Platform for Mobility Management are needed in order to:
 - Integrate all existing systems
 - Provide Traffic monitoring, management and control
 - Provide real-time traffic information and forecasts





“Bi-directional communication between the field and the Traffic Control Center”



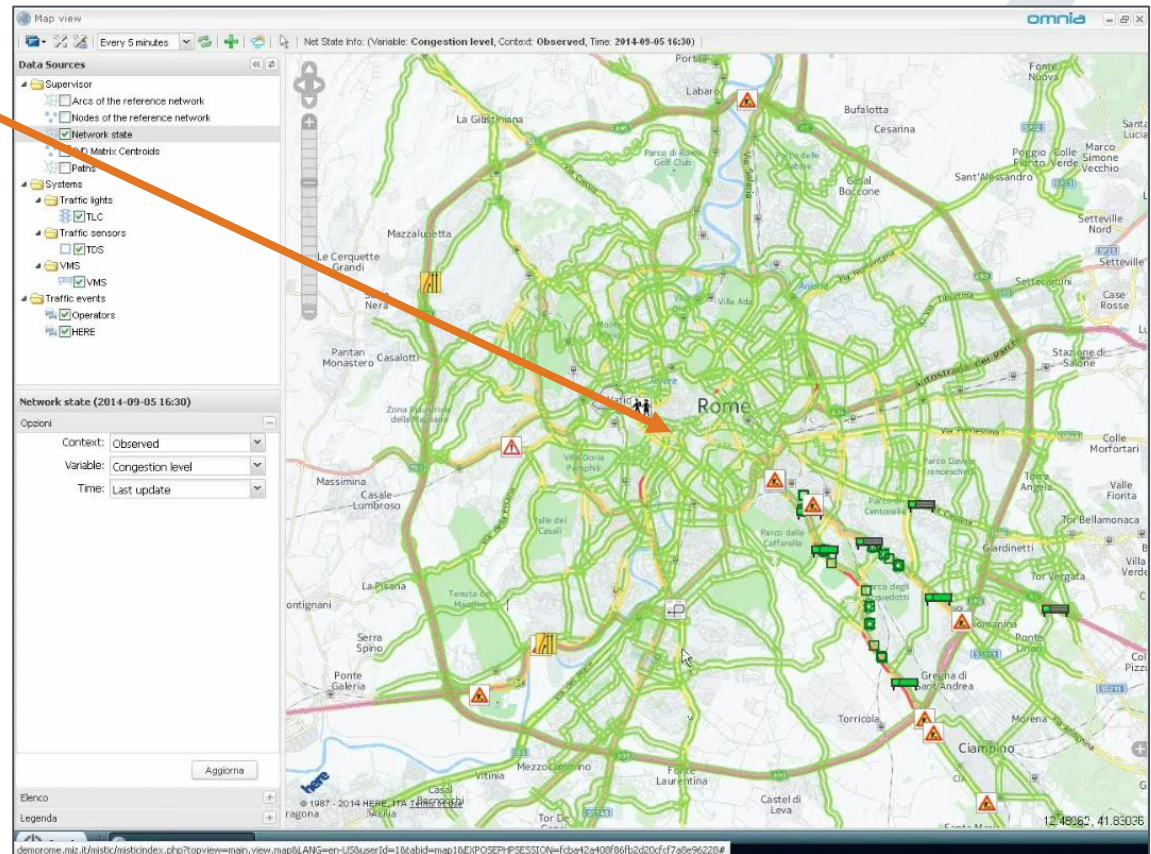
- obtain **bidirectional** entity
- the integrated **social network contents** with traffic sensors and traffic subsystems data provides
 - improved **traffic status, events** & convey reliable info
 - improved strategies and control at network level
- It helps transport operator to **set up a rank** for provision of benefits for those who behave good

Big Data fusion techniques are applied to:

- Estimate traffic conditions where probes are not available/sufficient
- **Predict traffic flows and congestion**
- Validate traffic events and identify anomalies



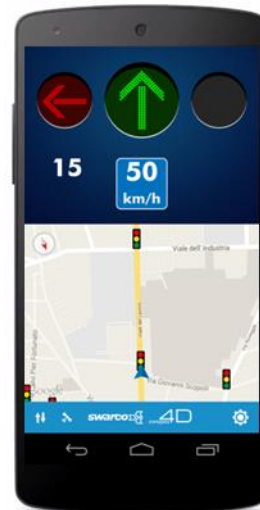
Enabling accurate and timely traveller information



New Innovative C-ITS Services



- Will arrive if data is available...
- Should be used on any mobile device...
 - Phones
 - Navigators
- "Smart glass" applications
 - Traffic information
 - Speed advisory
 - "Green wave" for cyclists





Thanks for your attention!

Contact details

